

# 接近开关 PROXIMITY SWITCH

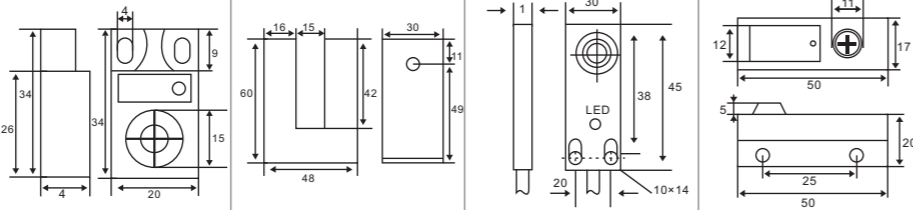
结构分类 Structural category      平面安装型 Plane installation type      角柱型 Angular column type

外形编号 Outward Appearance code      LMF25      LMF27      LMF29      LMF30

外形图例  
Outward appearance illustration



外形尺寸  
Overall dimensions

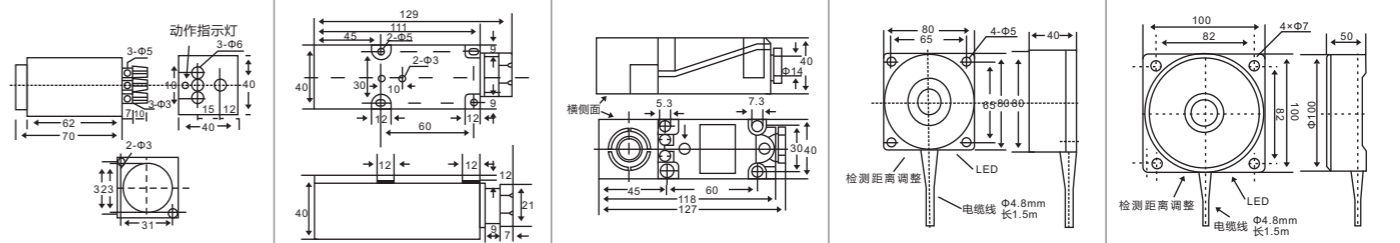


		检测距离 DETECTION DISTANCE					
		5mm					
埋入式 Flush	直流 DC 10-30 VDC	NPN	NO		LMF29-3005NA		
			NC		LMF29-3005NB		
			NO+NC		LMF29-3005NC		
		PNP	NO		LMF29-3005PA		
			NC		LMF29-3005PB		
	交流 AC 90-250 VAC	二线制 two wire system	NO		LMF29-3005PC		
			NC		LMF29-3005LA		
		SCR 可控硅 Control- lable silicon	NO		LMF29-2005A		
			NC		LMF29-2005B		
			NO+NC				
继电器输出 Relay output							
		检测距离 DETECTION DISTANCE					
		5mm	15mm	8mm	4mm		
非埋入式 Non-Flush	直流 DC 10-30 VDC	NPN	NO	LMF25-3005NA	LMF27-3015NA	LMF29-3008NA	LMF30-3004NA
			NC	LMF25-3005NB	LMF27-3015NB	LMF29-3008NB	LMF30-3004NB
			NO+NC	LMF25-3005NC	LMF27-3015NC	LMF29-3008NC	LMF30-3004NC
		PNP	NO	LMF25-3005PA	LMF27-3015PA	LMF29-3008PA	LMF30-3004PA
			NC	LMF25-3005PB	LMF27-3015PB	LMF29-3008PB	LMF30-3004PB
	交流 AC 90-250 VAC	二线制 two wire system	NO	LMF25-3005PC	LMF27-3015PC	LMF29-3008PC	LMF30-3004PC
			NC	LMF25-3005LA	LMF27-3015LA	LMF29-3008LA	LMF30-3004LA
		SCR 可控硅 Control- lable silicon	NO	LMF25-3005LB		LMF29-3008LB	
			NO	LMF25-2005A	LMF27-2015A	LMF29-2008A	LMF30-2004A
			NC	LMF25-2005B	LMF27-2015B	LMF29-2008B	LMF30-2004B
继电器输出 Relay output							
输出电流 Control output	DC	200mA	200mA	200mA	200mA		
	SCR/继电器 Relay	500mA	300mA	300mA	300mA		
输出电压降 Output voltage drop DC/AC		直流(NPN PNP)型3V以下、二线型:3.9V以下、交流AC 10V以下 DC<3V、AC<10V					
消耗电流 Consumption current		直流(NPN PNP)型DC 12V时8mA、24V时15mA、交流AC 10mA以下 DC<15mA、AC<10mA					
标准检测物体 Standard detected object		18×18×1(A3铁iron)	30×30×1(A3铁iron)	25×25×1(A3铁iron)	15×15×1(A3铁iron)		
重复精度 Repeated precision		0.05	0.05	0.05	0.05		
响应频率 DC/AC		500Hz/10Hz	300Hz/10Hz	300Hz	300Hz/10Hz		
工作环境温度 Working environment temperature		-25°C~+70°C	-25°C~+70°C	-25°C~+70°C	-25°C~+70°C		
绝缘电阻 Insulation resistance		50MΩ	50MΩ	50MΩ	50MΩ		
外壳材料 Shell material		ABS塑料 Plastil		ABS树脂 Resin			
防护等级 Protection grade		IP67	IP67	IP67	IP67		
可替代国内型号 Alyemative model at home and abroad							

# 接近开关 PROXIMITY SWITCH

角柱型 Angular column type      平面安装型 Plane installation type

LMF35      LMF36      LMF37      LMF38      LMF39



		检测距离 DETECTION DISTANCE					
		15mm					
埋入式 Flush	直流 DC 10-30 VDC	NPN	NO		LMF37-3015NA		
			NC		LMF37-3015NB		
			NO+NC		LMF37-3015NC		
		PNP	NO		LMF37-3015PA		
			NC		LMF37-3015PB		
	交流 AC 90-250 VAC	二线制 two wire system	NO		LMF37-3015PC		
			NC		LMF37-3015LA		
		SCR 可控硅 Control- lable silicon	NO		LMF37-2015A		
			NC		LMF37-2015B		
			NO+NC		LMF37-2015C		
继电器输出 Relay output							
		15mm	1-20mm	20mm	1-40mm	1-50mm	
非埋入式 Non-Flush	直流 DC 10-30 VDC	NPN	LMF35-3015NA	LMF36-3020NA	LMF37-3020NA	LMF38-3040NA	LMF39-3050NA
			LMF35-3015NB	LMF36-3020NB	LMF37-3020NB	LMF38-3040NB	LMF39-3050NB
			LMF35-3015NC	LMF36-3020NC	LMF37-3020NC	LMF38-3040NC	LMF39-3050NC
		PNP	LMF35-3015PA	LMF36-3020PA	LMF37-3020PA	LMF38-3040PA	LMF39-3050PA
			LMF35-3015PB	LMF36-3020PB	LMF37-3020PB	LMF38-3040PB	LMF39-3050PB
	交流 AC 90-250 VAC	二线制 two wire system	LMF35-3015PC	LMF36-3020PC	LMF37-3020PC	LMF38-3040PC	LMF39-3050PC
			LMF35-3015LA	LMF36-3020LA	LMF37-3020LA	LMF38-3040LA	LMF39-3050LA
		SCR 可控硅 Control- lable silicon	LMF35-3015LB	LMF36-3020LB	LMF37-3020LB	LMF38-3040LB	LMF39-3050LB
			LMF35-2015A	LMF36-2020A	LMF37-2020A	LMF38-2040A	LMF39-2050A
			LMF35-2015B	LMF36-2020B	LMF37-2020B	LMF38-2040B	LMF39-2050B
继电器输出 Relay output							
输出电流 Control output	DC	200mA	200mA	200mA	200mA	200mA	
	SCR/继电器 Relay	500mA	300mA/2A	300mA/2A	300mA/2A	300mA/2A	
输出电压降 Output voltage drop DC/AC		直流(NPN PNP)型3V以下、二线型:3.9V以下、交流AC 10V以下 DC<3V、AC<10V					
消耗电流 Consumption current		直流(NPN PNP)型DC 12V时8mA、24V时15mA、交流AC 10mA以下 DC<15mA、AC<10mA					
标准检测物体 Standard detected object		40×40×1(A3铁iron)	50×50×1(A3铁iron)	50×50×1(A3铁iron)	100×100×1(A3铁iron)	120×120×1(A3铁iron)	
重复精度 Repeated precision		0.05	0.2	0.2	0.5	0.5	
响应频率 DC/AC		200Hz/15Hz	500Hz/15Hz	200Hz/15Hz	50Hz/10Hz	50Hz/10Hz	
工作环境温度 Working environment temperature		-25°C~+70°C	-25°C~+70°C	-25°C~+70°C	-25°C~+75°C	-25°C~+75°C	
绝缘电阻 Insulation resistance		≥50MΩ	50MΩ	≥50MΩ	50MΩ	50MΩ	
外壳材料 Shell material		ABS树脂 Resin	ABS树脂 Resin	ABS树脂 Resin			
防护等级 Protection grade		IP67	IP67	IP67	IP67	IP67	
可替代国内型号 Alyemative model at home and abroad		JDK-2正负		HY-A20□	TCD-2040□	TCD-2050□	